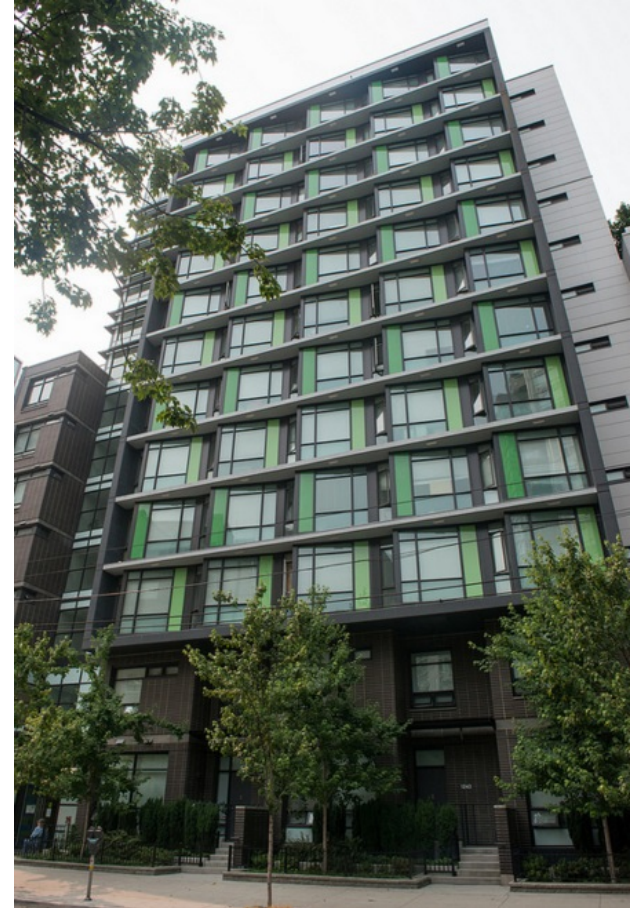


Columbia Basin Investment in Affordable Housing (CBIAH)

Michael Lachocki, Senior Manager Supply Chain Management, BC Housing

Agenda

- Program Overview
- Project Approval Process
- Expression of Interest (EOI)
 - EOI Submission Requirements
 - Review & Selection Process
- Q & A Period



Objective of the Session

To present and discuss the Program and create a forum to address questions from potential respondents

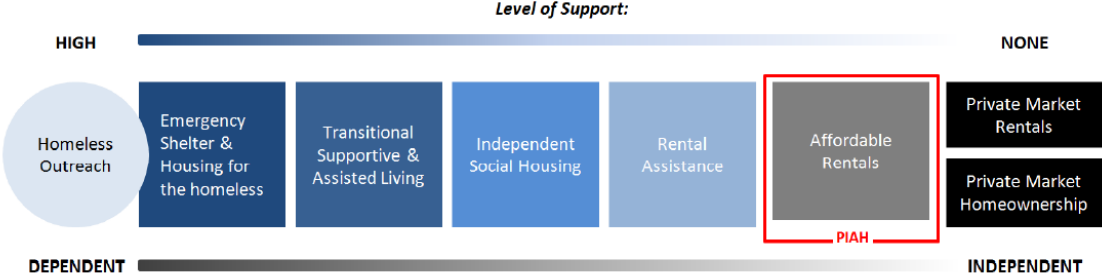


Principles

- Facilitate the creation of new affordable rental housing for low and moderate income households in communities within the Columbia Basin Trust geographic region
- Affordable Housing is established in communities with demonstrated need
- Developments are financially and environmentally sustainable
- Consistency with regional and community priorities and plans
- Project partners are expected to maximize their equity contributions to projects
- Transparent and accountable operations



CBIAH within the Housing Continuum



EOI Requirements

- Registered in Good Standing under the Society Act and with BC Housing
- State purpose of providing Affordable Housing
- Respondents with no previous relations to the Trust or BCH are still encouraged to submit proposals



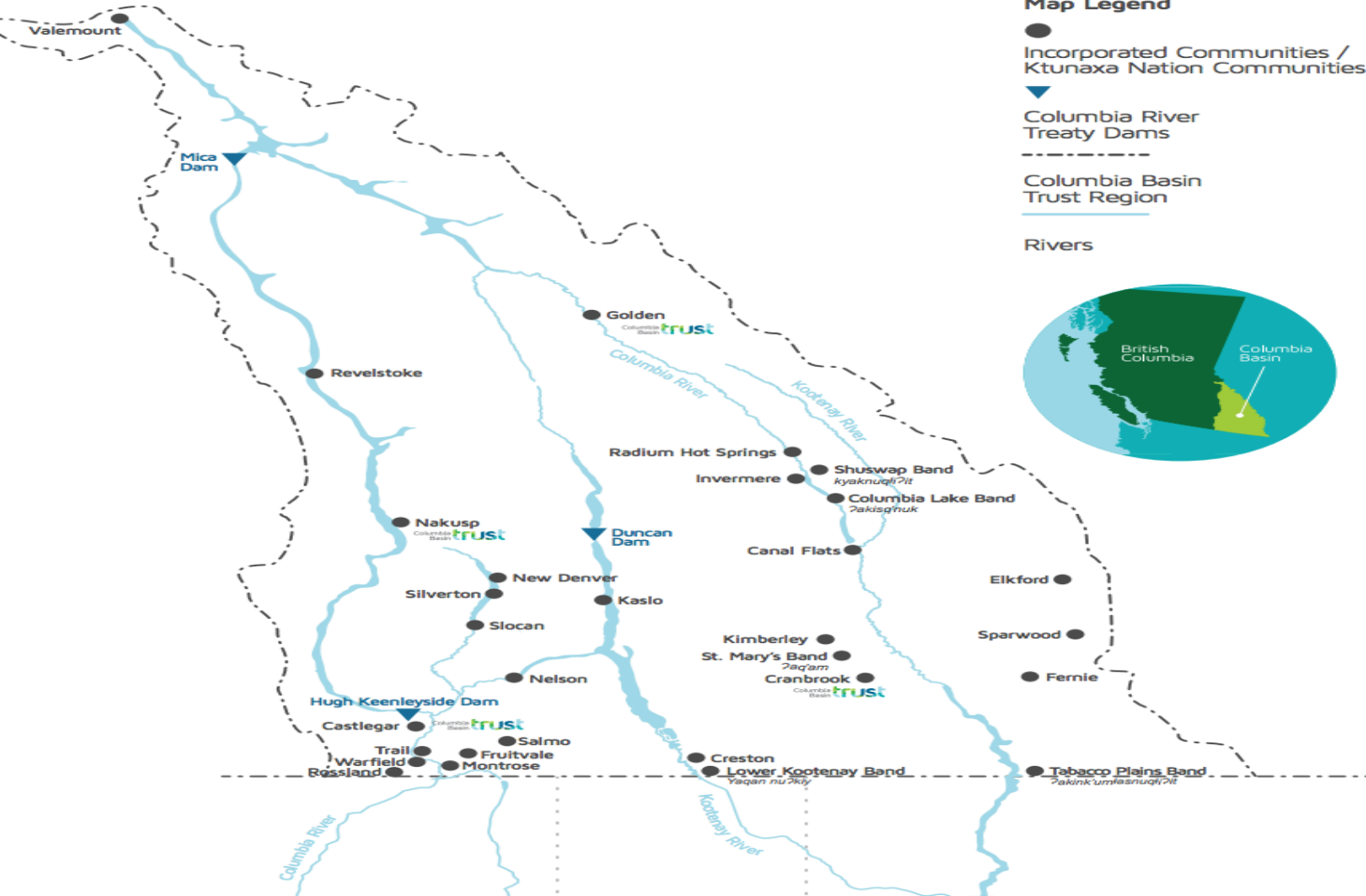
Funding Restrictions

- Residential care facilities are not eligible
- Developments must be operationally sustainable without additional assistance from the Trust or BCH
- Proponent must be based or already operating within the Basin and project must be located within the Basin geographic area



Columbia Basin Trust Region

Columbia Basin Trust serves the region consisting of all the watersheds that flow into the Columbia River in Canada.



Map Legend

● Incorporated Communities / Ktunaxa Nation Communities

▼ Columbia River Treaty Dams

----- Columbia Basin Trust Region

Rivers



EOI Information

Clients & Concept

- Targeted client group(s) and why these have been selected for this project
- Evidence of community need to house these individuals
- Physical site location (exact address) and why you feel this location best meets the needs of the targeted individuals i.e. proximity to transit and services, etc.
- Your organization's experience in housing or serving these individuals and your capacity to take on these units in addition to units already operated
- Any partnerships your organization may enter into with the development or operation of this project and why these organizations were selected

EOI Information

Project Development & Operations

- Building size and design (number of storeys, total square footage), total number of units, number of affordable rental units
- Type(s) and numbers of affordable rental units; number of bedrooms, square footage of each unit type, anticipated monthly rents per type. Any other building spaces such as common rooms, amenities, commercial spaces, etc.
- Estimated total project construction cost as well as the estimated construction cost per affordable rental unit
- Operational plan for the project - what services will be provided, estimated operating costs and how your organization will fund the operations to ensure they are self-sustaining
- High level schedule showing construction commencement, completion and when the project will begin operation



EOI Information

Equity Requested, Contributions & Support

- Total equity funding amount requested, number of affordable rental units this would include and what percentage of the project's total units
- Contributions your organization can provide or secure to contribute towards this project (examples: existing land, cash, assets, other funding or letters of intent from municipal governments, etc.)
- Levels of support towards this project, from local governments, community residents, other partnering organizations, etc.

EOI Information

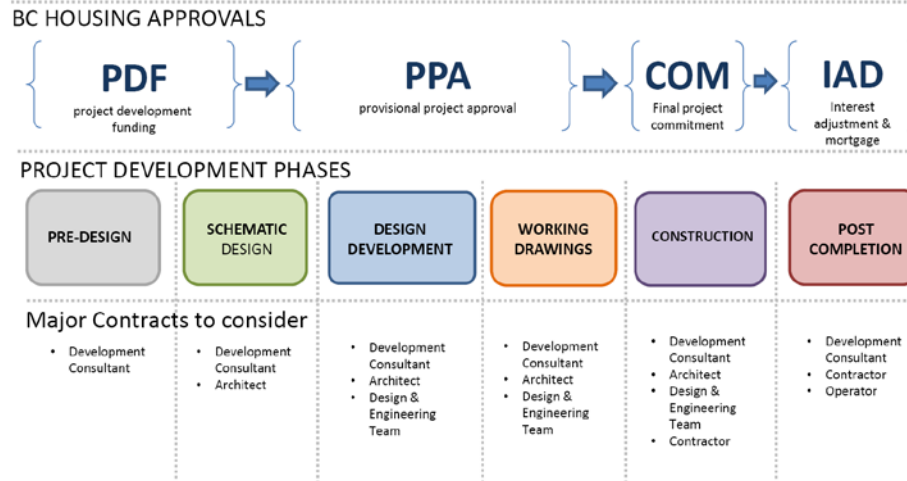
Alignment, Opportunities & Impact

- Benefits of how adding these units would strengthen your organization's portfolio and your ability to better serve your clients within your community
- Specific impact(s) these new units would bring to your community in reducing the need for affordable rental housing
- Personal impact and benefits these new units would provide to the targeted individuals

EOI Selection Process



BC Housing Project Approval Process



CBIAH EOI Timeline

- 18 Dec. 2017 – EOI Issued
- 22 Jan. 2018 – Information Meeting
- 23 Jan. 2018 – Deadline for further questions
- 29 Jan. 2018 – Issue addendum (if required)
- 08 Feb. 2018 @ 2 p.m. PT – Submission deadline

EOI Submission

08 February 2018 @ 2pm PST - email to:
mlachocki@bchousing.org

Respondents are responsible for submitting their project in time

10 pages- include all
requested information

Additional appendices, if relevant, are acceptable



Further Questions?

Please send your questions to piah@bchousing.org

An addendum will be issued with responses to project proponent's questions received following this webinar

