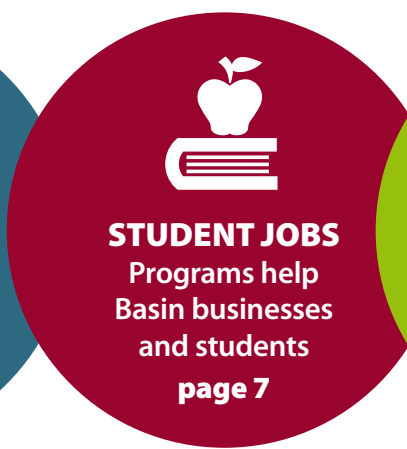




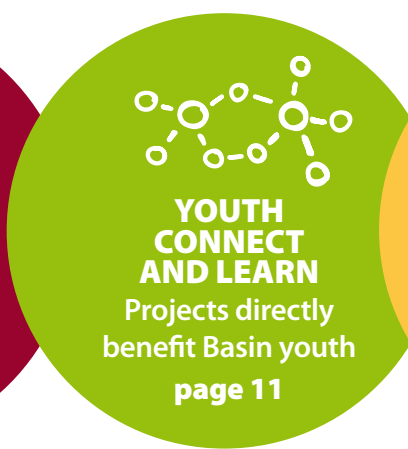
YOU'RE INVITED

Symposium registration now open
page 5



STUDENT JOBS

Programs help Basin businesses and students
page 7



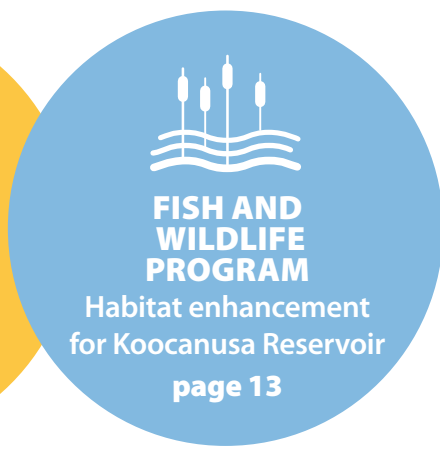
YOUTH CONNECT AND LEARN

Projects directly benefit Basin youth
page 11



INCREASING SOCIAL WELL-BEING

\$1 million goes to 37 projects
page 10



FISH AND WILDLIFE PROGRAM

Habitat enhancement for Koocanusa Reservoir
page 13

COLUMBIA BASIN TRUST

REPORT TO RESIDENTS

WWW.CBT.ORG / YOUR PRIORITIES / YOUR CHOICES / YOUR SUCCESSES / FALL 2013

EVOLVING

As CBT evolves, more and more we've been placing decision making in the hands of Basin communities, supporting you as you make your own choices on issues that affect your futures. The result: communities empowered to take action and create positive outcomes.

EMPOWERING

READ INSIDE as we celebrate a few of the many achievements of Basin communities like yours. →

Message From the Chair and CEO

Due to deliberate and prudent planning, CBT was able to deliver a record \$19.3 million in funding benefits to the region in 2012/13—11.6 per cent higher than in the previous year. We're proud to say this growth isn't unique, but a positive upward trend we've been following for some time; over the past decade, our average annual growth rate has been approximately 17 per cent. (See more on page 3.)



Greg Deck, CBT Board Chair



Neil Muth, CBT President and CEO

While CBT continues to respond to the needs of communities—be these geographic or communities of interest—our approach is evolving. We have always had programs and initiatives that place decision making in the hands of communities, but have recently been expanding this approach to other areas, supporting communities as they make their own choices on issues that affect their futures and empowering them to see those choices result in positive outcomes.

Three examples of this evolving approach are:

- **Community Directed Funds**, in which participating communities receive a set amount of funds to be used to support local priorities (p. 8);
- the **Community Directed Youth Funds** program, in which communities receive \$100,000 over four years to increase activities, opportunities and services for youth (p. 11); and
- the **Social Grants Program**, in which granting decisions are made by volunteers from the social sector community, who select projects that address sector priorities (p. 10).

CBT also helps support Basin communities in other significant ways. For example, in 2012/13 we:

- committed \$3 million to the East Kootenay-Koocanusa Fish and Wildlife Program, which will help protect and enhance fish, wildlife and habitats in and around the Koocanusa Reservoir and its tributaries (p. 13);

In 2012/13, we strengthened existing partnerships and forged new ones, expanded our programs and initiatives and explored new approaches to help communities address their priorities.

- contributed \$560,000 to College of the Rockies toward purchasing the latest mining haul truck simulators, which will enable Basin residents to train to work in the Kootenays' thriving mining sector (p. 6);
- supported community projects with nearly \$3 million through our Community Development Program (p. 8 – 9);
- had the first call for proposals under a three-year, \$10-million partnership with BC Housing to create affordable rental housing in the Basin (p. 10);
- delivered the first year of a \$4.5-million, three-year commitment to the student wage subsidy programs School Works and Summer Works (p. 7);
- supported projects that helped to maintain or enhance environmental conditions and provide educational information in and around their communities with \$1 million through the Environmental Initiatives Program (p. 12); and
- made progress on laying a foundation for bringing broadband to the Basin through the Columbia Basin Broadband Corporation, a CBT subsidiary created to develop a world-class open-access broadband network across the Basin.

CBT also continued to fund a wide range of programs and initiatives in the Basin, including ongoing work in areas like climate change, water, scholarships, literacy and arts, culture and heritage.

OUTLOOK

Our ability to deliver benefits to the Basin is attributable to CBT's strong financial position. We expect this strength to continue in the coming years.

We are also focusing on renewing our three core strategic plans. These plans identify three-year goals and objectives aimed at addressing social, economic and environmental issues affecting the Basin, and will be used to guide CBT's activities (p. 5).

In addition, we will be providing an opportunity for Basin residents to connect with both CBT and each other at the Columbia Basin Symposium, October 18 – 20, 2013, in Creston (p. 5).

You Are Invited

Each year we host our Annual General Meeting in a different community around the Basin. Join us in Elkford for a **free community BBQ** on Friday, September 27, 2013.

www.cbt.org/agm

ACKNOWLEDGEMENTS

Our dedicated partners, advisory committee members, staff and Board members continually help us effectively support communities striving to address their priorities.

We would specifically like to thank Garry Merkel, who was instrumental in the formation of CBT and retired as Board Chair at the end of 2012 (p. 3). With his departure, Greg Deck became Chair, while Laurie Page became Vice-Chair. We also welcomed Rick Jensen from Cranbrook.

And of course, we thank you all.

Gregory Deck *Neil Muth*

Greg Deck
Chair, Board of Directors

Neil Muth
President and CEO



Back row from left to right:
Kim Deane, Greg Deck (Chair), Wendy Booth, Paul Peterson, Am Naqvi;
Middle row from left to right:
Rick Jensen, Cindy Gallinger, Gord DeRosa, David Raven, Andru McCracken;
Front row from left to right:
Denise Birdstone, Laurie Page (Vice-Chair).

Meet Our Directors

Learn more about our activities by attending the public session at one of our Board meetings. View the schedule and read highlights and meeting minutes online.

www.cbt.org/board

Our Mission

Columbia Basin Trust supports efforts by the people of the Basin to create a legacy of social, economic and environmental well-being and to achieve greater self-sufficiency for present and future generations.

Financial Review and Forecast

CBT delivered a record \$19.3 million in funding benefits to the region in 2012/13

—11.6 per cent higher than in 2011/12.

Read the In-depth Report

More details are available in
CBT's 2012/13 Annual Report, available at
1.800.505.8998 or at

www.cbt.org/annualreport.

Total revenues were \$25.7 million, an increase of \$2.7 million over 2011/12, primarily due to greater revenue from two of our power project facilities. The fiscal year's deficit was \$753,000. Over the last several years, CBT's Investment Program earnings have increased, making more funds available for delivering benefits to the Basin.

Instead of immediately using the new funds, however, we built our capacity to return higher levels of benefits over the long term by accumulating surpluses in those years. As a result, CBT was able to fully fund a higher level of benefits in 2012/13 (and has budgeted to continue doing so over the next two fiscal years) without incurring any operational or financial issues as a result of the deficit.

Seventy-seven per cent of CBT's revenues are derived from power investments, which are being managed by long-time partner Columbia Power Corporation. Despite a short-term outage at Brilliant Expansion, net income from Power Projects increased by \$3.4 million from 2011/12, to \$19.7 million.

The Private Placements portfolio includes CBT's investment in real estate projects and Basin-based businesses. Net income from Real Estate Investments increased slightly to \$818,000, from \$627,000 in 2011/12, largely due to lower interest expense for two facilities that were refinanced at lower interest rates. Revenues from Commercial Loans and Investments were slightly lower in 2012/13, at \$925,000, due to lower portfolio balances in the earlier portion of the fiscal year. Throughout the year, a total of \$9.5 million in new commercial loans was approved.

Due to a volatile global economy, CBT's diversified Market Securities portfolio recorded \$611,000 in revenues compared to \$860,000 in 2011/12. All of our investments are long-term in nature and are intended to create value over time.

Short-term Investments revenue consists of interest revenue from a portfolio of short-term deposits held at financial institutions and with the British Columbia Investment Management Corporation. Revenues decreased slightly in 2012/13, to \$1.6 million, as portfolio balances decreased throughout the year as monies were transferred for CBT's investment in the Waneta Expansion Project, delivering benefits, new investment opportunities and corporate administration expenses.

Looking ahead, we expect stable earnings from all major revenue streams in 2013/14 and 2014/15 and are predicting to record a surplus in each year.

A \$20-million loan was advanced to Columbia Power in April 2011. Interest only will be payable until April 2016, at the rate of 5.67 per cent, after which the loan will be repayable in 50 semi-annual payments of principal and interest. Revenue received in 2012/13 from this loan totalled \$1.1 million.

Looking ahead, we expect stable earnings from all major revenue streams in 2013/14 and 2014/15 and are predicting to record a surplus in each year. In 2015/16, revenues will increase at an even greater rate due to a new power sale agreement coming into effect partway through the year at Arrow Lakes Generating Station, as well as a forecasted completion of the Waneta Expansion Project in spring 2015. The budgets for delivering benefits are \$19.4 million in 2013/14, \$20.2 million in 2014/15 and \$25 million in 2015/16.

CONSOLIDATED STATEMENT OF OPERATIONS (FOR THE YEAR ENDING MARCH 31)

(in thousands)

	2013	2012
Revenues	\$25,650	\$22,938
Expenses		
Water and Environment Initiatives	7,518	6,802
Social Initiatives	5,841	2,576
Community Development Initiatives	5,508	8,749
Economic Initiatives	2,779	2,887
Youth Initiatives	1,867	1,296
Broadband Initiatives	558	-
Investment Initiatives	531	913
Other Initiatives	401	231
Total Expenses	25,003	23,454
Private Placements-Impairment Loss	(1,400)	-
Annual Deficit	\$(753)	\$(516)

CONSOLIDATED STATEMENT OF FINANCIAL POSITION (AS AT MARCH 31)

(in thousands)

	2013	2012
Financial Assets	\$431,986	\$428,732
Liabilities	25,888	21,088
Non-financial Assets	4,821	2,930
Accumulated Surplus	\$410,919	\$410,574

RETURN ON INVESTMENTS (FOR THE YEAR ENDING MARCH 31)

	2013	2012
Power Projects	10.7%	10.1%
Private Placements	2.5%	7.3%
Market Securities	7.8%	1.6%

Garry Merkel Commended for Dedication to CBT and Our Region

This year CBT bid farewell to one of our founding Board members, Garry Merkel. Garry was instrumental in the formation of CBT, first as part of the committee that negotiated with the Province of BC for the establishment of CBT, and then as a founding member of CBT's Board. He served as Vice-Chair from 1995 to 2006, then Chair from 2006 to 2012. Garry was acknowledged for his input, leadership and many contributions over the past 18 years at a dinner held in March.

For all you have done
(and continue to do) for the Columbia Basin,
thank you Garry!

The Columbia River Treaty: Keep Up to Date

PROVINCIAL REVIEW CONTINUES

By late 2013, the provincial Columbia River Treaty (CRT) 2014 Review Team will make its recommendation to Cabinet on the future of the CRT. Follow the provincial review at www.gov.bc.ca/columbiarivertreaty and read the latest provincial reports, including a BC perspective on the U.S. benefits from the CRT—past, present and future.

LOCAL GOVERNMENTS' COMMITTEE

The CRT Local Governments' Committee met with U.S. local governments in May and is preparing preliminary recommendations to the Province on the future of the CRT, including proposed solutions to domestic issues raised by Basin residents. The recommendations will be online at

www.cbt.org/lgcommittee.

GET U.S. INFO ONLINE

Get U.S. perspectives, including the working draft regional recommendations on the future of the CRT, at

www.crt2014-2024review.gov.

CBT: Answering Your Questions

New online resources will answer many questions raised by Basin residents:

- Overview of Known U.S. Perspectives;
- Sharing Benefits From Natural Resources With Local Stakeholders in BC; and
- Water and Climate Change in the Canadian Columbia Basin.

www.cbt.org/crt



JOIN THE CONVERSATION
ON TWITTER AT

[#crttreaty](https://twitter.com/crttreaty).

The Columbia Basin Transformed

ELEVEN VIDEOS TITLED:

The Promise of Electricity

Natural Flooding Before the Dams

Building of the Columbia River Treaty Dams

Shifting Ecosystems

Agricultural Life

Transportation

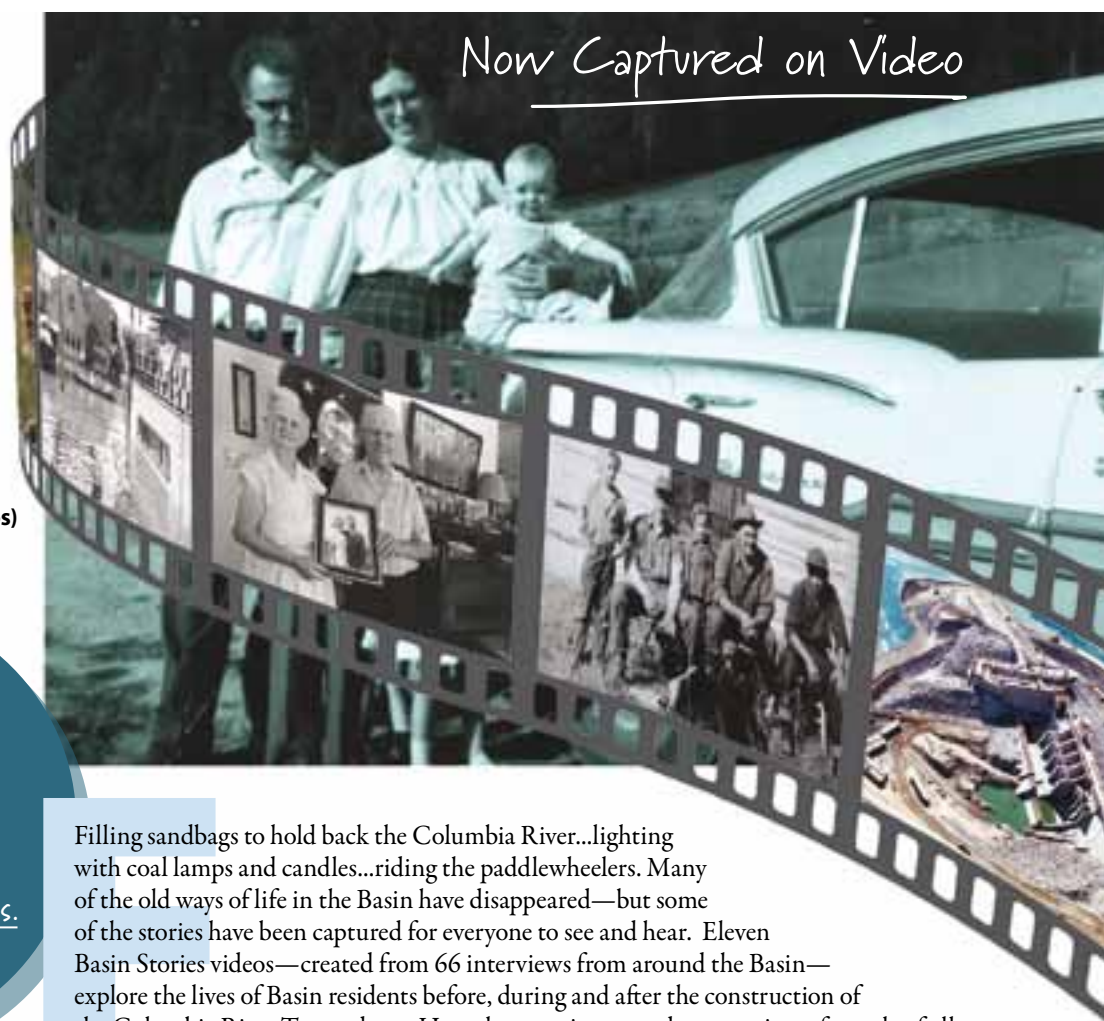
Economy and Commerce

Moving Lives: Stories of Displaced Residents (3 videos)

A Region Formed

CHECK OUT THESE
VIDEOS AND OTHER
STORIES AT

www.cbt.org/basinstories.



Filling sandbags to hold back the Columbia River...lighting with coal lamps and candles...riding the paddlewheelers. Many of the old ways of life in the Basin have disappeared—but some of the stories have been captured for everyone to see and hear. Eleven Basin Stories videos—created from 66 interviews from around the Basin—explore the lives of Basin residents before, during and after the construction of the Columbia River Treaty dams. Hear the experiences and perspectives of people of all walks of life, including displaced residents, dam workers, First Nations people, elected officials, historians and former BC Hydro employees. View historical photos that touch upon everything from building the dams, to agricultural life, to the arrival of electricity.

A Huge Thanks to...

CBT's three advisory committees—social, economic and environment—which play an integral role in providing community perspectives, sector expertise and strategic advice on CBT's activities and priorities. They also play an important role in providing information on CBT's programs and opportunities to communities throughout the Basin. CBT also has a youth committee made up of youth from around the Basin who provide CBT with a youth perspective and adjudicate CBT's Youth Grants Programs.

www.cbt.org/advisorycommittees

The Youth Advisory Committee as of September 2012:

Back row from left to right:

Darelyn Hutchinson, Laura Kanik,
James Klemmensen, Blake Nicol,
Wesley Routley, Curtis Bendig;

Front row from left to right:

Theresa Thoms, Sierra Franklin,
Bailey Repp, Taryn Walker, Paniz
Khosroshahy, Danika Reid.



Your Feedback Is Important to Us

Fill out the included reply card or go online at www.cbt.org/R2R2013feedback.

You'll be entered to win a CBT prize pack!

Engagement Pilot Project

By broadening our understanding of the issues and engaging residents in a variety of ways, CBT is able to develop plans that guide our direction, support our core functions and resonate with everyone who calls the Basin home.

To get more information to help us in our planning processes, CBT recently engaged the public in a pilot project using an online tool called THOUGHTstream. In the first phase of the project we asked Basin residents to identify the key social, economic and environmental issues in our region, and how to address them. We received over 10,000 thoughts, which were

**“A goal
without a plan
is just a wish.”**

ANTOINE DE SAINT-EXUPÉRY

then grouped by idea. In the second phase, residents reviewed these ideas and placed virtual stars (more than 90,000!) beside those they felt had the highest priority. Those priorities are now being organized into common themes to be reviewed by CBT and shared with all THOUGHTstream participants and Basin residents in a final report this fall. This information will also serve as one form of public input into the renewal of our strategic plans.

Food for THOUGHT

THOUGHTstream is stakeholder engagement software developed by Rossland-based company Fulcrum Management Solutions. Its development was inspired by James Surowiecki, *The Wisdom of Crowds* and the theories of collective intelligence. Crowd wisdom and collective intelligence theories suggest that crowdsourcing—asking a large, diverse, individually independent group with local knowledge—works because it incorporates a variety of perspectives and knowledge from people who are most familiar with and most affected by the issue. (Source: www.thoughtstream.ca)

THOUGHTSTREAM FAST STATS

1399
people participated
in CBT's
THOUGHTstream
process

10,792
thoughts were generated

976
people starred ideas
as priorities

97,021
stars were assigned*

1814
priorities were identified

*Note: Up to three stars could be assigned to an idea: a collection of similar thoughts.

Register Now!

Connect with fellow Basin residents at the 2013 Columbia Basin Symposium, to be held October 18 to 20 in Creston. This event will focus on “Community Change Through Collaborative Action.”

The keynote speaker will be Paul Born, President and Co-founder of Tamarack: An Institute for Community Engagement, which helps people collaborate to address complex community issues. He is the author of the bestselling *Community Conversations: Mobilizing the Ideas, Skills and Passion of Community Organizations, Governments, Business and People*.

Another presenter will be Ray Bollman of the Rural Development Institute of Brandon University. Bollman is the former Chief of the Rural Research Group of Statistics Canada and a focus of his research interests is the socio-economic aspects of rural populations.

The Symposium will also be an opportunity to learn more about the work CBT is doing in the region and to provide input into our current planning initiatives.

SYMPOSIUM REGISTRATION IS NOW OPEN AND SPACE IS LIMITED.

The Symposium is free of charge.
For more information, visit

www.cbt.org/2013symposium.

PUBLIC INVITED!

CBT invites you to an evening of Basin Culture and Entertainment at Wynndel Hall, Creston at 8 p.m., Saturday, October 19, 2013.

Get to Know Creston

Take a self-guided tour during your time in Creston! Visit the Creston Museum, Creston Valley Wildlife Management Area, College of the Rockies Greenhouse and Creston Visitor Centre, or test some local eats and drinks at Kootenay Alpine Cheese, Kokanee Brewery and the Baillie-Grohman, Wynwood and Skimmerhorn wineries, or stop by and watch artists at work at the many pottery and art studios. More details on these tours are available at the Symposium.



Sneak Peek at the Agenda

DAY 1: FRIDAY, OCTOBER 18

- 1:30 p.m. Refreshments and mingling
- 2:30 p.m. Welcome and opening
- 4:00 p.m. Plenary: Emerging Themes
- 6:30 p.m. Dinner and keynote: Paul Born, Collective Impact

DAY 2: SATURDAY, OCTOBER 19

- 8:45 a.m. Morning welcome and announcements
- 9:00 a.m. Morning concurrent sessions:
 - Broadband and Rural Revitalization
 - Columbia River Treaty Local Government
 - Community Conversations With Paul Born
 - Fourth session TBD
- 10:45 a.m. Plenary: A panel discussion—Overcoming Common Barriers to Collaboration
- noon Networking lunch
- 1:30 p.m. Afternoon concurrent social, economic and environment sector planning sessions
- 4:00 p.m. Plenary: Opportunities for Cross-sectoral Collaboration
- 8:00 p.m. Evening of Basin Culture and Entertainment—open to public, Wynndel Hall, transportation provided

DAY 3: SUNDAY, OCTOBER 20

- 8:30 a.m. Morning announcements
- 8:45 a.m. Plenary: Future CBT scenarios—a structured discussion of CBT's future growth
- 11:45 a.m. Closing: Greg Deck, CBT Board Chair



Simulators Help Supply In-demand Drivers

Basin residents wishing to work in the Kootenays' thriving mining sector will be able to train on the latest mining haul truck simulators at College of the Rockies. The college purchased the simulators thanks to \$560,000 in support from CBT, \$580,000 from the provincial government and more than \$1.7 million from the federal government. The simulators will help train a labour force that is in high demand by the local mining sector, which anticipates hiring thousands of people over the next five years, the majority of which start as haul truck drivers.



PARTNER PROFILE: SELKIRK COLLEGE

Student, Courses, Campuses— and Communities

When you think of a college, you think of students, courses and campuses. Selkirk College has all these, but also partners with CBT to make sure communities throughout the region have the information they need to make informed decisions.

This is done through the Columbia Basin Rural Development Institute (RDI, www.cbrdi.ca), which is housed at Selkirk's Castlegar Campus. Announced in 2010, the RDI is an eight-year partnership between Selkirk and CBT with the goal of strengthening rural communities by compiling research, analyzing that research, sharing the information widely and engaging communities in using this research.

In addition to the RDI, Selkirk addresses its students' unmet financial needs by offering CBT's College Community Service Awards, which reward and encourage volunteerism, and the Columbia Basin Bursary Program, which promotes access to education and training based on financial need.

www.selkirk.ca



READ MORE ABOUT
THIS PARTNERSHIP AT

www.cbt.org/selkirk

A Push to Strengthen Manufacturing and Technology Businesses

The Manufacturing and Technology Sector Initiative (MATS) is a two-year initiative supporting economic diversification and development in the Basin, with a focus on the manufacturing and technology sectors. Delivered in partnership with the Kootenay Association of Science and Technology and Kootenay Rockies Innovation Council, MATS focuses on the development, retention and expansion of Basin manufacturing and technology businesses. The Business Retention and Expansion (BRE) project is part of the MATS initiative.

www.kast.com www.kric.ca www.cbt.org/mats

WHAT ONE THING COULD BE DONE TO HELP PROMOTE GROWTH IN THIS SECTOR?



BRE RESEARCH

BRE objectives are:

- to provide data on key challenges, issues and opportunities faced by manufacturing and technology businesses in the region; and
- to develop data-supported recommendations regarding important future focus areas for strengthening the region's manufacturing and technology sectors.

The information below has been extracted from Report on Manufacturing and Technology Sectors, published in April 2013. Access it online at

http://issuu.com/kastinfo/docs/bre_mats_report_may_29

179 90%

companies surveyed said training is important



#1

strength identified by companies is the small-town lifestyle



Opportunities for Small Businesses—and Students

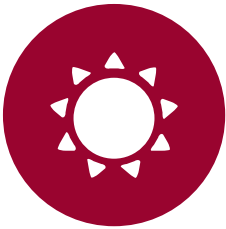
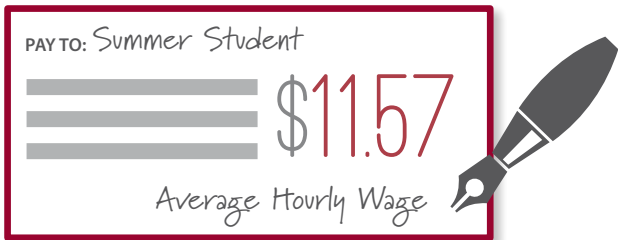
TOTAL STUDENT JOBS CREATED IN 2012/13:

261 JOBS



SCHOOL WORKS PROGRAM
Provides a wage subsidy to encourage businesses and organizations in the Basin to provide part-time employment for full-time high school and post-secondary students during the school year.

www.cbt.org/schoolworks



SUMMER WORKS PROGRAM
Provides an hourly wage subsidy to support the success of small business in the Basin, plus creates up to 150 summer jobs for students in the region.

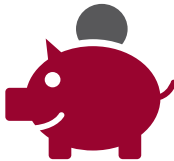
www.cbt.org/summerworks



of students said they gained new skills

76%

80%



of students saved wages for future post-secondary education

77

entry-level positions

69

career-level positions

97%

of organizations felt they benefited from hiring a student



"I was very lucky to have this opportunity because I got work that was related to my field of study, and everything I was learning in school I could apply to my job. I learned some great carpentry skills, plus the more technical aspects of trail building. I can definitely see myself using these skills for future employment."

SARAH MEUNIER, STUDENT, ON BEING ABLE TO WORK FOR THE CASTLEGAR FRIENDS OF PARKS AND TRAILS SOCIETY



Business Program Expands Services

To meet the growing needs of local businesses and help them succeed, CBT is expanding its popular Basin Business Advisors (BBA) program.

BBA has been supporting small- and medium-sized businesses in the Basin since 2000. The program provides one-to-one, confidential business counselling and assessment services, and arranges and shares the costs of specialized consulting services. Now these services will be available to all business models including social enterprises. Starting in fall 2013, the program will offer pre-start-up entrepreneurial workshops.

BBA is managed by Community Futures Central Kootenay and delivered in partnership with other Community Futures organizations in the Basin.

www.cbt.org/bba

BASIN Business ADVISORS
CONFIDENTIAL. COUNSELLED. CUSTOMIZED.

Boosting Employability

Lisa Voight was planning to apply for a job at Whitewater Ski Resort, but was missing experience in a few software computer skills. She applied for and received funding through CBT's Training Fee Support program to take two courses—Adobe Illustrator and Adobe InDesign—at Community Futures in Nelson, and is now the Marketing Coordinator at the resort.

"I felt I was qualified and experienced for a potential job in most areas of the job description, except for the design software experience," said Voight. "I can't imagine how much I would be fumbling around in my new job without this Adobe training. It really helped give me confidence in my new job and has opened up a multitude of other job possibilities for me in the future."

Taking these courses proved to Voight's potential employer that she had initiative to boost her education in areas where she lacked experience. She got the job and her employer spent less time training her because of the skills she gained.

The Training Fee Support program is a bursary-style program that promotes access to training that helps Basin residents adapt to meet immediate employment needs.

www.cbt.org/tfs



Lisa Voight, Whitewater Ski Resort

Helping Communities Address Their

Communities Make Own Funding Decisions

Three Basin areas have signed on to an innovative approach to community development that CBT announced last year: Community Directed Funds. In this program, groups of communities that form an area receive funding and support from CBT as they make their own choices on issues that affect their futures.

For three years, the Columbia and Elk valleys will each receive \$200,000 per year, while the Slokan Valley will receive \$100,000 per year. With this money, a steering group in each valley is able to set priorities and manage funds to best address local issues.

"What makes this program unique is that it is aimed at valley-wide projects," said Mary Giuliano, Chair, Elk Valley Community Directed Funds Committee. "I believe this gives us a wonderful opportunity to work collaboratively toward common goals for the valley as a whole."

PARTNER PROFILE: REGIONAL DISTRICTS

Local Governments Help Distribute CBT Funds

Eighteen years in existence. Over 9,000 projects funded. A \$35-million commitment since inception. Any way you look at it, the numbers behind CBT's Community Initiatives and Affected Areas Programs are notable.

CBT partners with local governments, which administer the programs for their areas.

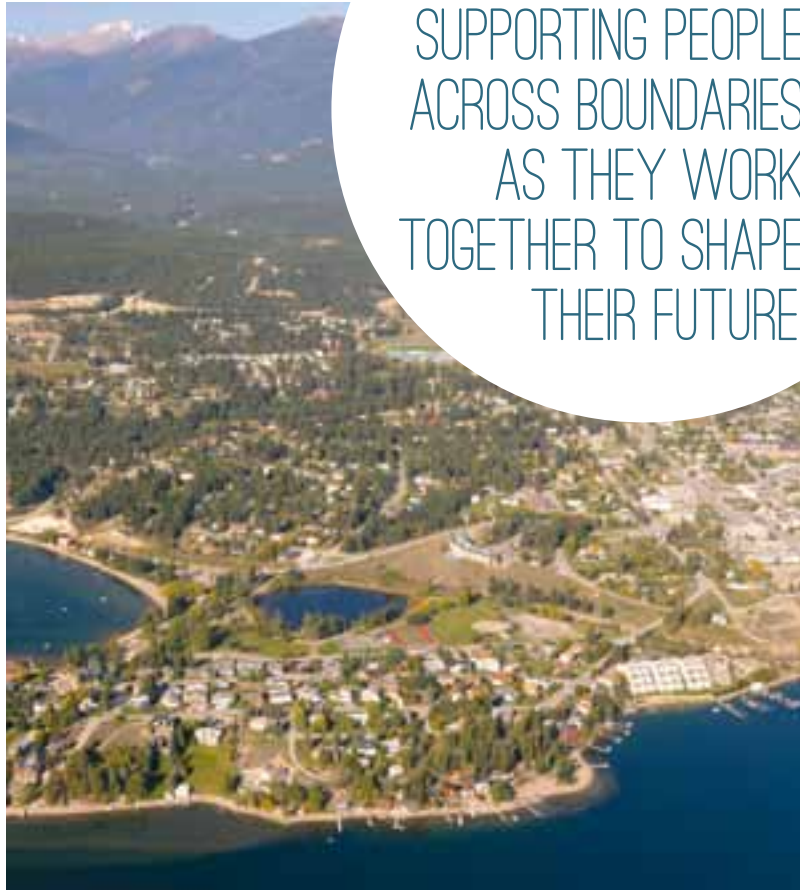
There are seven of these partners, ensuring all communities within the Basin have access to these funds:

1. City of Revelstoke;
2. Ktunaxa Nation Council;
3. Regional District of Central Kootenay;
4. Regional District of East Kootenay;
5. Regional District of Kootenay Boundary;
6. Town of Golden; and
7. Village of Valemount.

READ MORE ABOUT
THIS PARTNERSHIP AT

www.cbt.org/partnerscipaap

SUPPORTING PEOPLE
ACROSS BOUNDARIES
AS THEY WORK
TOGETHER TO SHAPE
THEIR FUTURE.



Moving Ideas Into Proposals

CBT's community liaisons help communities and residents access funds and serve as resources for the region. One of the ways they do this is by sharing knowledge about project development and grant writing. This year they hosted 14 workshops in eight locations across the Basin. The workshops covered how to identify funders, focus a project idea, develop a budget and write clearly. **Let us know if your organization or community would like to schedule a workshop.**

www.cbt.org/contact

9,000⁺

projects funded by CBT's
Community Initiatives and
Affected Areas Programs

BURTON GAZEBO READY TO ENJOY

Supported in part by CBT, the Burton Historical Park has a new covered gazebo where residents and visitors can gather, picnic and enjoy entertainment. "This gazebo is one step toward improving our infrastructure, which will help our economic situation and entice new residents to settle in the area," said Al Ralston, Burton Community Hall Association.

www.cbt.org/burtongazebo

"It instills us with a feeling of community pride and a sense of a positive future. It also reflects the success of the strong volunteerism in Burton."

AL RALSTON, BURTON COMMUNITY HALL ASSOCIATION



FROM DREAM TO REALITY

For about 25 years, the community of Fairmont Hot Springs has been raising funds and working toward getting a community centre. Now, with funding from CBT, the local Lions Club has opened the Lions Community Den: a centrally located, multipurpose meeting place for groups of all kinds. "This project will give Fairmont Hot Springs a much needed facility to hold community activities," said Norbert Schab, Project Chair Person, Fairmont and District Lions Club. "It will assist greatly in providing a sense of community and a focus for social development."

www.cbt.org/lionsden

CBT supports hundreds of projects each year through several programs and initiatives, including the Community Development Program, featured here. See what's happening your community!

www.cbt.org/fundedprojects

www.cbt.org/programs

Priorities

CASTLEGAR LIBRARY UPGRADES

The Castlegar and District Public Library underwent infrastructure upgrades thanks to funding from the federal government's Community Infrastructure Improvement Fund, with additional support from CBT. With \$14,118 in federal funding and \$6,750 from CBT—50 per cent of the community's required portion—the City of Castlegar completed upgrades to the library's heating, ventilation and air conditioning systems. The library now benefits from modern, reliable components that help improve efficiency and reduce energy consumption, and its patrons benefit from a controlled and comfortable environment.

www.cbt.org/castlegarlibrary



GROUNDSWELL SHARES SUCCESS WITH OTHERS

Invermere's Groundswell Network Society has been a growing success for more than a decade. Because of this success, other communities have looked to Groundswell for help in creating their own community greenhouse and garden projects. With funding from CBT, Groundswell will deliver workshops and look toward creating webinars. "We've been facing a growing demand from other communities, organizations and individuals asking for help on developing their own projects," said Bill Swan, Groundswell Project Leader.

www.cbt.org/groundswell

"This funding will help us better share our experience and understanding of what it takes to design and execute these community assets successfully."

BILL SWAN, GROUNDSWELL PROJECT LEADER

NAKUSP LODGE NOT JUST FOR SKIING

The Nakusp Ski Club has partnered with local recreational groups to help its lodge become a year-round, multi-purpose facility. With \$100,000 in support from CBT, the plan is to create an all-season hub for different activities. The project is a great example of people working together to achieve more. What started as a simple ski hill improvement project has grown into a plan for a well-rounded community asset. Once completed, the facility will be an inviting destination for a range of activities.

www.cbt.org/nakuspskihill

PARTNER PROFILE: COLUMBIA KOOTENAY CULTURAL ALLIANCE

*Strengthening Arts,
Culture and Heritage*

They create the novels we read, the paintings we admire and the dance performances we attend. They allow us to connect with our history in museums and at historical sites. They help keep our communities vibrant. The individuals and organizations involved in arts, culture and heritage enrich the lives of Basin residents and visitors.

CBT supports the sector through our Arts, Culture and Heritage Program, delivered since 1998 by the Columbia Kootenay Cultural Alliance (CKCA).

CKCA's goal is to build long-term sustainability for artists and to strengthen and support arts, culture and heritage organizations. In 2012/13, CKCA received over \$700,000 from CBT, which enabled it to fund over 160 projects.

www.basinculture.com



CKCA's 14-member steering committee, made up of residents from around the Basin: *From left to right:* Deborah Loxam-Kohl; Penny A.P. Anderson; Stephanie Judy; Dorothy Blunden; Jane Shaw; Stephanie Fischer; Laura White; Margaret Pacaud; Derryl White; Jacquie Hamilton; Anne Jardine; Trevor Lundy and Laurie Charlton. *Missing:* Thelma Brown.

READ MORE ABOUT
THIS PARTNERSHIP AT

www.cbt.org/ckca



Projects Support Social Well-being



One of the successful recipients of CBT's Social Grants Program (SGP) is the Canoe Valley Community Association. Its project is a community hub that provides services to families with young children in Valemount.

"This centre provides a fun, free and safe location for parents and children to play, learn and share," said Charlotte Abernathy, President, Canoe Valley Community Association. "The clothing exchange fills an essential need, and offers families a great opportunity to recycle."

Valemount's community hub for families with young children.

Book and toy exchanges are favourites with the kids. Family programs, events and workshops, both general interest and Aboriginal, will be offered."

SGP is a three-year pilot with an annual granting budget of \$1 million. Granting decisions are made by the Social Grants Program Selection Committee, a volunteer group of Basin residents that includes individuals who have experience and expertise in the social sector and individuals who have broader community development experience.

Two intakes of SGP have been held, with \$1 million in funding provided to 37 projects.

www.cbt.org/sgp

PARTNER PROFILE: COLUMBIA BASIN ALLIANCE FOR LITERACY

Local Literacy Needs Addressed

Whether attempting to peruse a newspaper, read a bus schedule, fill out a job application or decipher medical instructions, reading is a skill essential to our daily lives. Yet many people across Canada, including in the Basin, find themselves struggling.

Recognizing that literacy skills are vital to the well-being of Basin residents and communities, for over a decade CBT has partnered with the Columbia Basin Alliance for Literacy (CBAL).

CBAL works by assisting communities as they tackle their individual literacy needs, offering programs and resources focused on topics like reading, writing, early language learning, English as a second language and computer literacy.

"CBAL's Young Parents Education Program helped improve my life. I had been trying to get my grade 12 done for a few years but daycare was expensive, and with two kids it was hard to get anything done online," said Chelsea Jenkins, who has since graduated and is now attending college.

www.cbal.org



READ MORE ABOUT
THIS PARTNERSHIP AT

www.cbt.org/cbal

Partnering for Affordable Rental Housing

Delivered in partnership with BC Housing, the Affordable Rental Housing initiative is a result of federal, provincial and CBT investments; the Government of Canada and Province of BC are providing a combined investment of \$5 million, while CBT is contributing another \$5 million.

The following societies are working in partnership to develop new affordable rental housing through this initiative:

- Creston Valley Community Housing Society;
- Elk Valley Family Society;
- Elk Valley Seniors Housing Society;
- Family Resource Centre of Invermere;
- Lower Columbia Community Development Team Society;
- Nelson CARES Society;
- Revelstoke Community Housing Society; and
- Salmo Supportive Housing Society.

www.cbt.org/arhi

With support from the program, **Elk Valley Family Society** was able to secure 12 units that will provide more options for moderate affordable rental housing in Fernie. The Elk Valley Family Society provides residents in Fernie with safe, quality housing and supportive activities.

"Quality, safe and affordable rental housing for families, couples, singles and seniors is hard to come by in the Fernie area. This program was a super opportunity—having these additional units allows us to add to the continuum of affordable housing options in Fernie to better serve the needs of our community!"

CORRIE HURLBURT, PROPERTY MANAGER,
ELK VALLEY FAMILY SOCIETY



Your Feedback Is Important to Us

Fill out the included reply card or go online at www.cbt.org/R2R2013feedback

You'll be entered to win a CBT prize pack!



WATCH THE VIDEO TO CHECK OUT VALEMOUNT'S PRIORITY-SETTING PROCESS:

www.cbt.org/cdyfvalemount

Communities Increase Youth Opportunities

Six communities completed their first year of the Community Directed Youth Funds (CDYF) program, which increases local activities, opportunities and/or services for youth. Through the program, New Denver and Golden opened youth centres, while other communities hired youth coordinators to increase youth opportunities.

Valemount is one of the next 10 communities who have gone through the CDYF priority-setting workshop.

"It has been an exciting process connecting with local youth to gain visibility in Valemount for the CBT Community

Directed Youth Funds," said Dorthe Flauer, Youth Services Coordinator. "With openness and a commitment to listen to the youth, the projects are slowly evolving as we engage youth and connect them and their ideas with various mentors in the community."

CDYF commits \$100,000 to communities and their surrounding areas over a four-year period to enhance local opportunities and services targeted at youth.

www.cbt.org/cdyf

Basin Youth Connect and Learn

The Ymir Community Youth Initiative and the Revelstoke Growing Junior Urban Farmers project have been huge successes in their communities—and are just two examples of the great projects that were approved in the fall 2012 intake of CBT's Youth Grants Program (YGP).

"The Ymir Community Youth Initiative provides amazing opportunities for our local youth to connect with each other and learn new valuable skills from mentors," said Carla Stephenson, Coordinator. "The projects that we have taken on have created a greater sense of community engagement and responsibility, pride and ownership in our youth. They are excited to be filling essential positions as youth volunteers at our Tiny Lights Festival and to be engaged in the development of projects in Ymir."

Hailey Ross is the Project Coordinator for the North Columbia Environmental Society: "It's a stressful time to grow up in the world, bombarded with information about impending climate change impacts, rising food costs, globalized job markets and the destruction of global and

local ecosystems. Thanks to CBT's funding of the Junior Urban Farmers program, Revelstoke youth now have an increased chance to get involved in projects that are fun, fulfilling, educational and often delicious. They gain tangible experiences that actively address these issues, leaving an empowered community in its wake."

With two annual intakes, YGP funds up to \$15,000 per project on projects that directly benefit Basin youth aged 12 to 29. A range of organizations, school districts, First Nations organizations and local governments—plus youth aged 15 to 29 with a sponsoring organization—can apply.

The next intake takes place in fall 2013.

www.cbt.org/ygp

27 bursaries awarded in the first year of the **Columbia Basin Bursary Program**, offered through College of the Rockies, Selkirk College and Okanagan College Revelstoke Campus.

www.cbt.org/cbbp

PARTNER PROFILE:

COLLEGE OF THE ROCKIES

A Local College Extends Its Reach

It may have seven campuses, but the reach of College of the Rockies (COTR) extends far beyond its campus boundaries. By partnering with CBT, the college is helping us deliver benefits to students, businesses and others Basin-wide.

COTR administers CBT's popular Summer Works and School Works programs.

COTR is also the administrator for CBT's Training Fee Support Program, plus offers the College Community Service Awards and the Columbia Basin Bursary Program to its own students.

www.cotr.bc.ca



READ MORE ABOUT THIS PARTNERSHIP AT

www.cbt.org/cotr



As part of a planning session, Ymir youth participated in a workshop to learn microphone techniques, write and record radio commercials for the Tiny Lights Festival.



Learn more about urban farming and agriculture, get the inside scoop on current food truck trends and hear a student's perspective on bullying in the fall edition of **SCRATCH** magazine, hitting the stands in September!

www.scratchonline.ca

Youth Action Grants is a new program that supports projects from Basin youth aged 12 to 19, with up to \$3,000 for projects that demonstrate youth-led action with positive outcomes. There are monthly intakes for this program, on the first of every month.

www.cbt.org/yag

Students Engage in Environment and Heritage

View the landscape through the eyes of a porcupine, discover the truth about turtles or learn how to dance the Métis jig. For 14 years, children and teenagers across the Basin have benefited from these programs and more through Wild Voices for Kids, a program delivered by Columbia Basin Environmental Education Network (CBEEN), supported by CBT.

"Students throughout the Basin have a totally unique opportunity thanks to CBEEN and our partners like CBT," said Susie Macdonald, Wild Voices Program Coordinator. "A little effort in our local communities has unleashed a stunning number of talented, passionate and expert citizens in environmental and heritage topics. Wild Voices gives them some support training to turn their passion into curriculum-linked programs, and they are off to the classroom to share that passion and connect our kids with their land and heritage."

Giving children the opportunity to become educated on the environment and their heritage is an essential part of building communities with people who are motivated to live both sustainably and respectfully—communities of people who understand the impacts they have on the environment, the people around them and the generations to come.

Since it began, the program has grown to include every Basin school district and has educated and inspired students across the Basin. Last year alone, it provided programs to nearly 10,000 students.

"CBEEN's presenters have a wonderful level of expertise, special supplies and select places to highlight environmental education," said Linda Out, a teacher who participated in the program. "The funding provided by Wild Voices offers students experiential learning not otherwise available."

www.cbeen.org/wvfk



40,000
students inspired

PARTNER PROFILE: WILDSIGHT

Children Connect With Nature

To protect the Basin's natural biodiversity, CBT encourages environmental education and awareness for all generations and supports various environmental education programs, including several developed and delivered by Wildsight.



In 2010, CBT and Wildsight jointly developed Know Your Watershed, which increases awareness of local watersheds and water-related issues amongst grade eight students. Wildsight also has two Education in the Wild programs, which have reached over 35,000 students since 2000.

www.wildsight.ca

READ MORE ABOUT
THIS PARTNERSHIP AT

www.cbt.org/wildsight

Improving Our Grasslands and Rangelands

Invasive plant management, protection of riparian areas and improvement of the grassland resource are just some of the types of projects that have been supported over the past two years through CBT's Grassland and Rangeland Enhancement Fund.

Managed by the Kootenay Livestock Association, this program focuses on helping improve Crown range by addressing ecosystem values that benefit all users, maintaining and enhancing biodiversity and long-term fish and wildlife productivity across the Basin, and improving compatibility between livestock management and recreation use.

A recent project involved building 3.2 km of fences to better separate recreational users and cattle and provide access to water for livestock.

"Columbia Basin Trust, Brian Zak and the Kootenay Livestock Association were a great help in making this project come together for us," said Lance Marcer, project participant. "The quality of the fence was in conjunction with the forestry standards, and the end result was fantastic."

www.cbt.org/gref



Thirty-six Projects Receive Support

In the fall 2012 intake of our Environmental Initiatives Program, 36 projects were approved to receive over \$1 million in support. The program supports projects that have a positive effect on our region's aquatic and terrestrial ecosystems, through both direct action and education. One of the approved projects was a caribou penning recovery project in the Revelstoke region. The grant supports year one of the project, which included constructing a pen to temporarily hold ten pregnant female caribou from the Columbia North herd. "The Revelstoke Caribou Rearing in the Wild Society thanks CBT for its support of community-based caribou recovery," said Sarah Boyle, Society Vice-Chair. "These funds will help construct the maternity pen that will protect caribou and their calves at their most vulnerable time."

www.cbt.org/eipprojects



Have an Environmental Project? Apply for a Grant!

Application forms for the large grants stream of CBT's Environmental Initiatives Program are available in early September. The deadline to submit is October 15, 2013.

www.cbt.org/eip

Fish and Wildlife Program for Kootenay-Koocanusa



A new program will help protect and enhance fish, wildlife and habitats in and around Koocanusa Reservoir and its tributaries in the Kootenay River system thanks to a \$3-million commitment from CBT. The support will go toward the creation of the East Kootenay-Koocanusa Fish and Wildlife Program, which will help enhance the environmental health of the area. The program will be delivered by the Fish and Wildlife Compensation Program in the Columbia region, a partnership between BC Hydro, the Province of BC, First Nations and local community groups.

“The Fish and Wildlife Compensation Board welcomes this opportunity to work with CBT and strengthen our partnership,” said Dave White, Fish and Wildlife Compensation Board member representing the East Kootenay. “We are looking forward to the planning process and hearing from local community members and First Nations

program covers
over
20,000 km²

to develop and deliver an Action Plan that will benefit fish and wildlife in this area.”

The program will cover an area of more than 20,000 square kilometres, including the Kootenay River drainage and associated tributaries within Canada, such as the Elk, Bull, St. Mary's, Lussier, White and Wigwam rivers and the Koocanusa Reservoir itself.

The next steps are to develop a Kootenay-Koocanusa Watershed Action Plan that will set goals, outcomes and proposed activities. The development of this plan will be guided by a strategic planning working group made up of representatives from CBT, the Fish and Wildlife Compensation Board, provincial government agencies, First Nations, local governments, industry and community groups in the area.

www.cbt.org/eastkootenaykoocanusa

14% = 1,678
savings swimming pools

On Target to Reducing Demand

Since signing on to CBT's Water Smart Charter in 2009, 23 Basin communities have reduced total water demand by 14 per cent—enough water to fill 1,678 Olympic-sized swimming pools. The target is to collectively reduce water demand by 20 per cent by 2015. As of December 2012, seven communities had already exceeded this target, with the highest savings at 27 per cent.

The Village of Nakusp, for example, reduced its demand by 15 per cent, primarily by reducing the amount of water lost through leakage in the distribution system.

“By using water more efficiently, the Village is working to protect our natural resources, extend the life of our existing infrastructure and improve the cost-effectiveness of our water

utility,” said Councillor Guy Duchaine. “Our next step is to work with residents to reduce outdoor water demand, which will keep us on track to beat our 2015 target.”

To reduce water use, communities are:

- improving data collection and analysis;
- reducing leakage in water distribution systems;
- supporting residents to reduce peak irrigation demand;
- improving local government irrigation practices; and
- implementing water metering programs while educating the residents.

www.cbt.org/watersmartsavings

New Website: Water Levels and Hydro Operations

You asked for it—and CBT delivered. Check out the new Power and Water site.

www.cbt.org/powerandwater

How Will the Basin Climate Change?

How has the climate in the Basin changed in the past, how is it projected to change in the future, what are the potential impacts and what can we do? These questions are addressed in the comprehensive resource *From Dialogue to Action: Climate Change, Impacts and Adaptation in the Canadian Columbia Basin*, created through our Communities Adapting to Climate Change Initiative.

www.cbt.org/dialoguetoactionrelease

SOME POTENTIAL ENVIRONMENTAL CHANGES

CHANGES ANTICIPATED:



Diseases & Pathogens

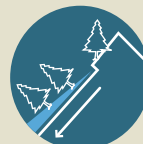


More Rapid Runoff



Flooding

PROJECTED TO INCREASE:



Landslides



Wildfire Risk



Pests



Average Annual Temperature



Drought



Rain-on-snow
and Rain-on-
frozen-ground



WATCH DR. MEL EXPLAIN AND ILLUSTRATE THE CHANGING CLIMATE IN THE BASIN.

www.cbt.org/dialoguetoactionvideo

Investing on Behalf of Basin Residents

CBT's Investment Program prudently invests the \$321-million endowment it received from the provincial government in 1995 in order to deliver long-term benefits to the residents of the Basin. The program currently invests in power projects, Basin-based businesses, real estate and market securities. These investments generate a predictable, sustainable and appreciating income stream to fund current and future Delivery of Benefits activities and cover corporate operating expenses. In addition to providing financial benefits, many of our investments promote social, economic and environmental well-being. www.cbt.org/investments



Taghum Stop owners Cam Robertson (left) and Shawn Robertson (right).

Expansion on the Horizon

“Working with CBT has been an exciting experience; we not only found someone to invest in our business, we found someone who wants to invest in us and our vision.”

CAM ROBERTSON, PRESIDENT, TAGHUM STOP

Taghum Stop is a gas bar, convenience store and liquor agency that serves the people who live near and travel the highway west of Nelson. In operation since the mid-1950s, the stop has been owned by three brothers since 1996—brothers who have visions of redeveloping to better serve their customers. In order to expand, the business needed to remove its underground storage tanks—no longer required thanks to a newer above-ground system—and perform an environmental assessment. To do so, it turned to CBT for financing. “With these done, we’re now in a position to proceed with our plans for redeveloping the site sooner rather than later,” said Cam Robertson, President.

100 Years and Beyond

In 1913, Monrad Wigen started a small box factory near Creston, in Wynndel. One hundred years later, Wigen’s descendants are still operating Wynndel Box & Lumber, making it the oldest family-owned lumber mill in BC and—with over 100 employees—one of the largest employers in the Creston Valley.

The sawmill may not have reached its 100th birthday, however, without a complete restructuring—made possible in part by financing from CBT. The management team was changed and the organization refocused on what it does best: making high-quality wood products and providing excellent customer service.

“CBT has been and will continue to be an excellent partner for Wynndel Box & Lumber.”

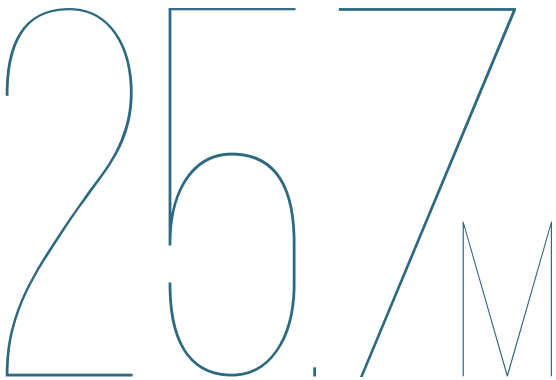
MICHAEL COMBS, CEO AND CHAIR, WYNNDEL BOX & LUMBER

“Once our restructuring plan was in place, we reached out to CBT and received funding and the support we needed,” said Michael Combs, CEO and Chair. “We’re more than halfway through our turnaround and the future is looking bright.”

www.wyndelllumber.com



Aerial view of Wynndel Lumber in the 1950s.



total CBT revenues in 2012/13





A new helicopter long-lining seismic equipment.

A Helicopter for Every Need

From forestry to tourism, industries of all types rely on the services of Yellowhead Helicopters. Based in Valemount, the family-owned business has been operating since 1975 and, as required, updates its equipment to keep pace with the ever-changing demands of the industries it supports.

This year, that meant purchasing five new helicopters with the help of CBT financing. These machines have increased the diversity of its fleet, helping ensure that new and existing clients are provided with the aircraft and equipment best suited to their needs.

www.yhl.ca

“The addition of five Eurocopter AS350 helicopters to our pre-existing fleet has helped us expand our operations and enter into new industries such as seismic and oil and gas.”

GARRY FORMAN, CEO, YELLOWHEAD HELICOPTERS

Waneta Expansion Project Continues on Schedule

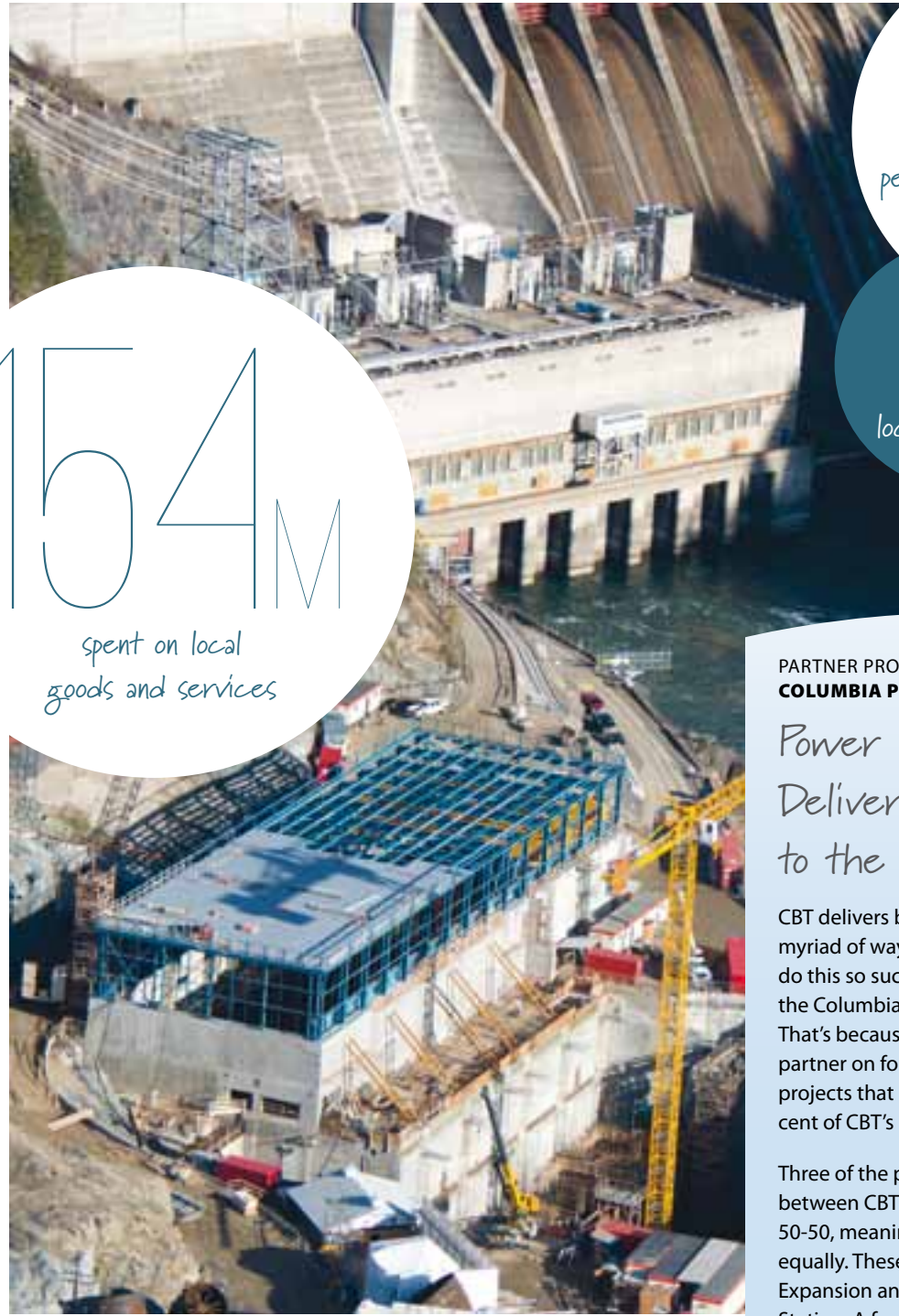
The Waneta Expansion Project is currently on schedule and the partners—Fortis Inc., Columbia Power Corporation and CBT—are pleased with the progress. The project is focused on a high standard of quality, safety and environmental protection. Currently, there are over 350 people working directly on the project with a local hire rate of 75 per cent. Local spending on goods and services has exceeded \$154 million.

The project's socio-economic monitoring program shows economic and employment benefits to the region and an extraordinary safety record. Public reports are available on Columbia Power's website at www.columbiapower.org.

During a community day on June 23, the partners welcomed over 1,500 guests to celebrate the project. This celebration included tours of the construction site, all-day entertainment, First Nations cultural presentations, live music, children's activities, a complimentary BBQ and informational displays.

The \$900-million project will see the construction of a 355-megawatt powerhouse immediately downstream of existing Waneta Dam. Once complete, the powerhouse will generate enough power to supply approximately 60,000 homes annually.

www.columbiapower.org/wanetaexpansion



350

people working directly on the project

75%

local hire rate

154M

spent on local goods and services

PARTNER PROFILE: COLUMBIA POWER

Power Investments Deliver Benefits to the Basin

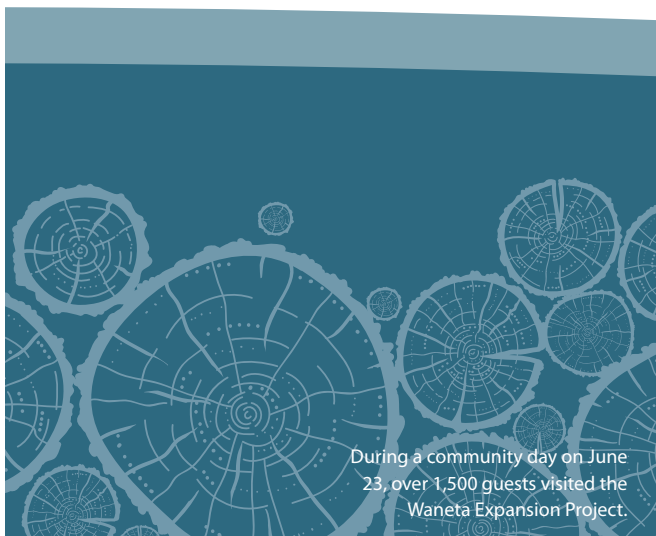
CBT delivers benefits to the Basin in a myriad of ways. It wouldn't be able to do this so successfully, however, without the Columbia Power Corporation. That's because Columbia Power is CBT's partner on four hydroelectric projects—projects that generate nearly 80 per cent of CBT's income.

Three of the projects are shared between CBT and Columbia Power 50-50, meaning profits are shared equally. These are Brilliant Dam, Brilliant Expansion and Arrow Lakes Generating Station. A fourth project, the Waneta Expansion Project—currently under construction, with completion expected by spring 2015—is a partnership between CBT (16.5 per cent interest), Columbia Power (32.5 per cent) and Fortis Inc. (51 per cent).

www.columbiapower.org

READ MORE ABOUT THIS PARTNERSHIP AT

www.cbt.org/cpc



During a community day on June 23, over 1,500 guests visited the Waneta Expansion Project.



Connect With Us

Follow CBT using two of your favourite social media tools.

www.facebook.com/ColumbiaBasinTrust

www.twitter.com/cbtinfo

Subscribe to **BASINLink**, CBT's monthly electronic newsletter.

www.cbt.org/newsletter

Contact us at 1.800.505.8998 or

cbt@cbt.org

www.cbt.org/contact

Thriving Together

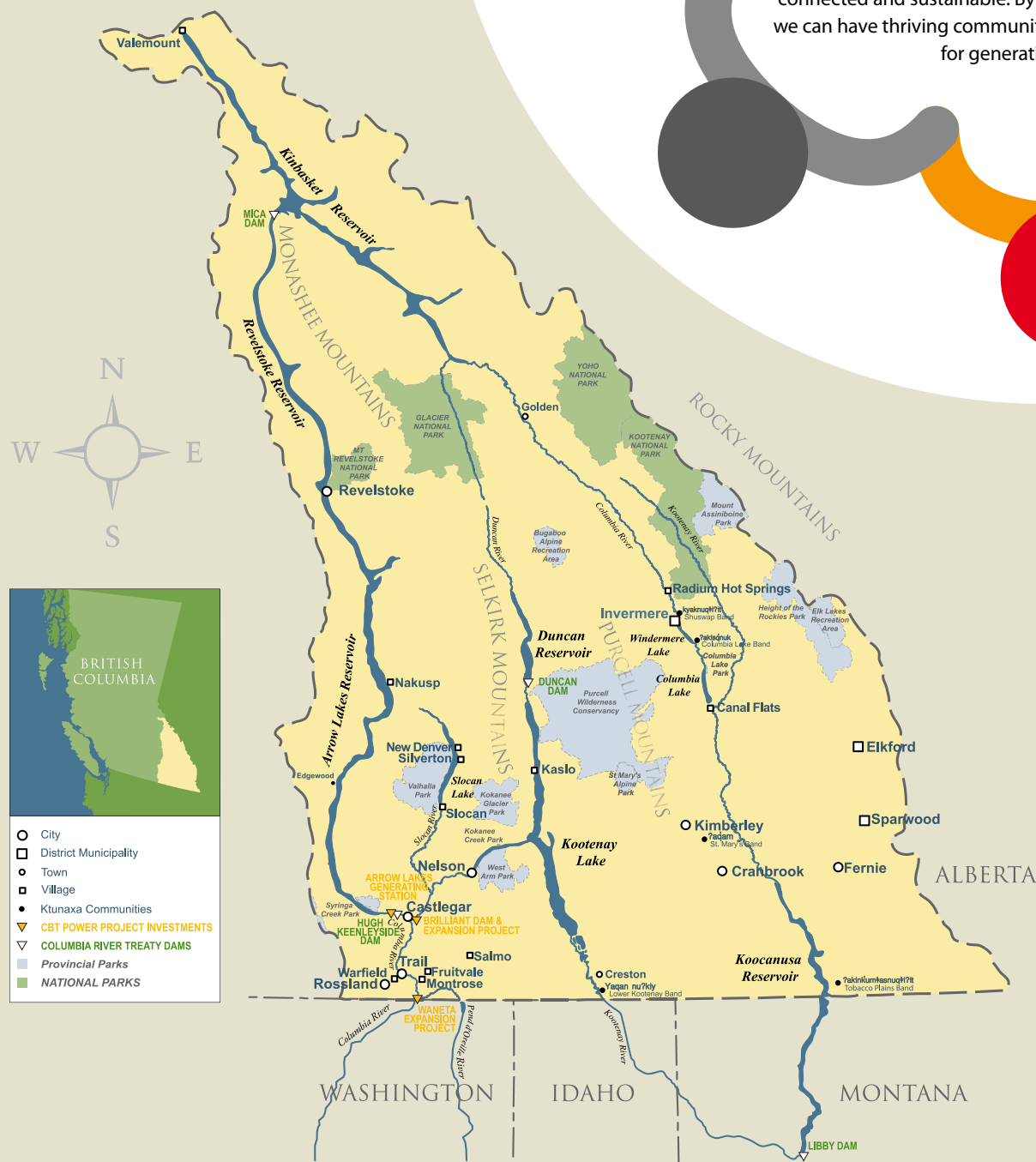
To strengthen well-being in the Basin, CBT works closely with Basin residents and communities, developing and delivering programs and initiatives that respond to your diverse needs, and supporting your efforts to improve quality of life and address issues.

Whether it's providing funding, information or expertise, bringing people together around key issues, or encouraging partnerships and collaboration, our support is tailored to the needs of communities and the projects that are priorities for you. We respond to each unique circumstance, plus help you address common, Basin-wide challenges.

None of us can succeed alone; we thank you for your efforts to help each other and build communities that are vibrant, connected and sustainable. By making sound choices together, we can have thriving communities, ensuring a great place to live for generations to come.

Columbia Basin Trust Region

www.cbt.org/map



Your Feedback Is Important to Us

Fill out the included reply card or go online at

www.cbt.org/R2R2013feedback

You'll be entered to win a CBT prize pack!

Printed in Canada. Design by www.frolixdesign.com.

www.cbt.org